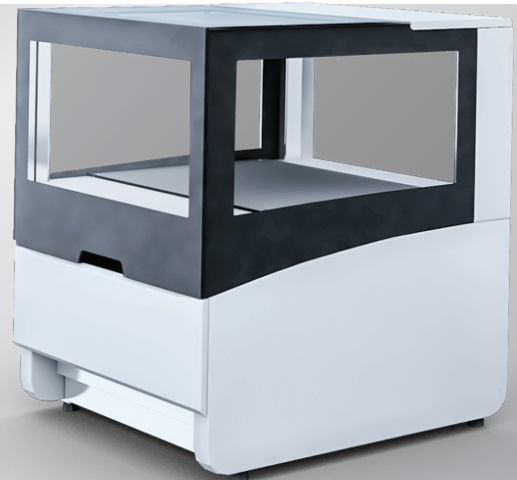


COCILS

CASH COUNTER



COCILS28

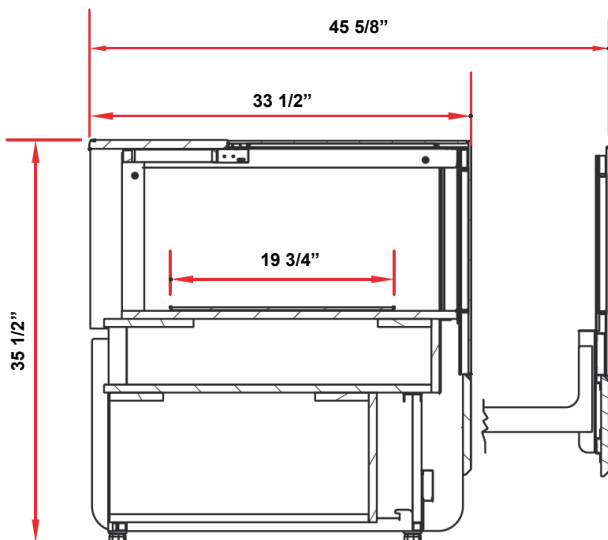
Standard Features

- External glass elements made of double glass with black silkscreen
- Internal frame painted - available in different colours
- Top internal LED illumination
- Kick plinth made of stainless steel

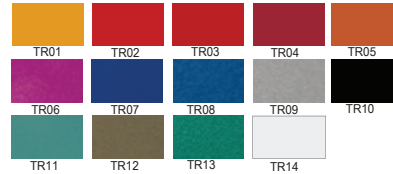
Options

- Internal frame & bottom shelf made of stainless steel (does not apply to aluminum shelf frame)
- Set of castors
- Different granite colours available

Technical Drawing



Trend colours



Metal element colours



Aluminum profiles colours



Granite colours



Dimensions

Model	Dimension W x D x H	Weight (lbs / kg)
COCILS28	27 1/2" x 33 1/2" x 35 1/2"	- / -
COCILS39	39 3/8" x 33 1/2" x 35 1/2"	- / -
COCILS55	55 1/8" x 33 1/2" x 35 1/2"	- / -

Voltage

- 115V | 1ph | 60 Hz | 1A, max. fuse: 15A

* Specifications are subject to change without notice.

**All measurements are approximates.

***All equipment are designed to operate in a controlled environment below 75°F (+24°C) temperature and HR 55% relative humidity.