

Specification/Data sheet

Stand II model XS 6 2/3 - Standard



Article number: 60.31.044

Description

The stand II ensures safe installation of the iCombi Pro XS, CombiMaster Plus XS 6-2/3 and SelfCookingCenter XS. The cooking system can be fixed on the base frame using a mounting kit.

Features

- 8 slide-in rails with two storage compartments and interim levels
- Two-sided opening with side panels and top panel
- Height-adjustable feet
- Mounting kit for fixing the cooking system on the base frame

Technical Specifications

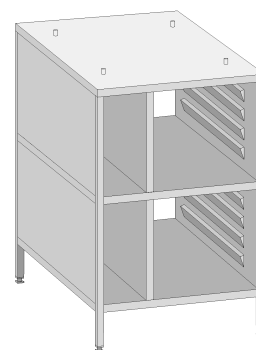
- WxLxH: 639 x 563 x 932 mm (25 1/8 x 22 1/8 x 36 3/4 inch)
- Width of racks: 329 mm
- Clearance from floor panel to floor: 150 mm
- max. fixed power: 690 kg
- Weight: 41 kg

Capacity

- 1/1 GN grid x 8
- 1/1 GN 20 mm deep x 8
- 1/1 GN 40 mm deep x 8
- 1/1 GN 65 mm deep x 8
- 1/1 GN 100 mm deep x 4
- Use of other containers: 1/4 GN, 1/3 GN, 1/2 GN, 2/3 GN

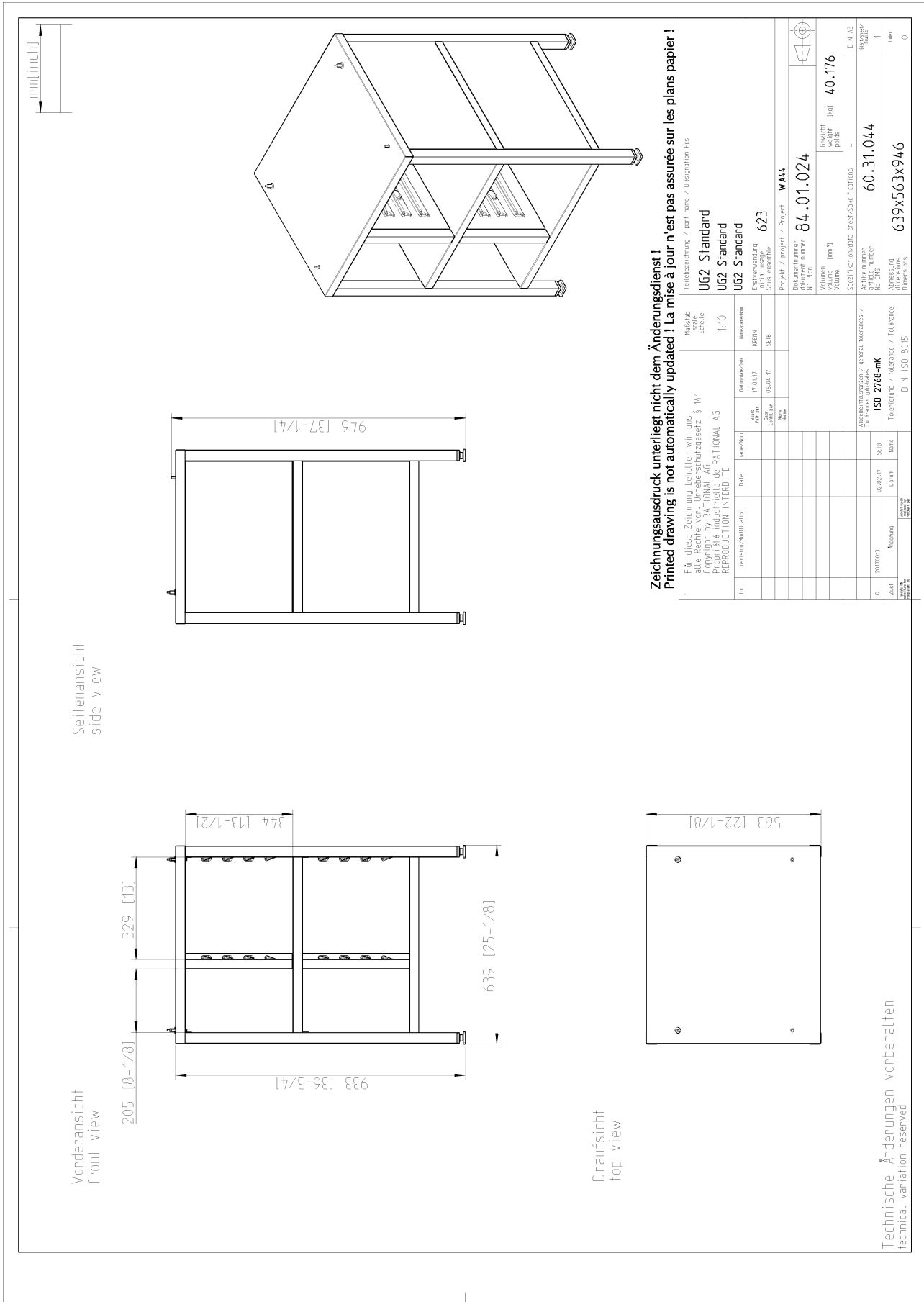
Material

- Rust-free stainless steel (CNS 1.4301)



Specification/Data sheet

Stand II model XS 6 2/3 - Standard



Zeichnungsausdruck unterliegt nicht dem Änderungsdienst!
Printed drawing is not automatically updated! La mise à jour n'est pas assurée sur les plans papier!

Für diese Zeichnung behalten wir uns alle Rechte vor. Urheberrechtsgesetz § 14.1 Copyright by RATIONAL AG Toute réimpression sans autorisation est interdite. REPRODUCTION INTERDITE			Teilbezeichnung / part name / Designation Pcs UG2 Standard UG2 Standard UG2 Standard		
Maßstab Echelle 1:10			Entwurfszeichnung / project / Project 623 WALK		
Name Name Name			Dokumentnummer / document number 84.01.024 Gewicht / Weight 40.176		
Datum Date Date			Volumen / Volume 84.01.024 Blatt / Sheet / Specifications 1		
Anzahl / Quantity 1			Abmessung / Dimensions 639x563x946		
Norm / Standard DIN ISO 8015			Allgemeinspezifikation / general. specifications / ISO 2766-mk Tolerierung / Tolerance / DIN ISO 8015		
Zertifikat / Certificate 20170101			Artikelnummer / article number 60.31.044		
Autorisierung / Authorization SEB			Abmessung / Dimensions 639x563x946		
Datum / Date 02.02.17			Blatt / Sheet / Specifications 1		
Name / Name SEB			Abmessung / Dimensions 639x563x946		
Datum / Date 02.02.17			Blatt / Sheet / Specifications 1		
Name / Name SEB			Abmessung / Dimensions 639x563x946		

Technische Änderungen vorbehalten
 Technical variation reserved