

# Specification/Data sheet

## Stand II model 6-1/1, 10-1/1 - Standard

---



Article number: 60.31.086

### Description

The base frame II ensures safe installation of the iCombi Pro and iCombi Classic 6-1/1 and 10-1/1. The cooking system can be fixed on the base frame using a mounting kit.

### Features

- 14 mounting rails with 62 mm rail distance
- Two-sided opening with side panels and top panel
- Height-adjustable feet
- Mounting kit for fixing the cooking system on the base frame

### Technical Specifications

- WxLxH: 860 x 703 x 699 - 719 mm (33 7/8 x 27 5/8 x 27 1/2 inch)
- Width of racks: 330 mm
- Clearance from bottom rack to floor panel: 68 mm
- Clearance from floor panel to floor: 180 mm
- Max. fixed power: 600 kg
- Weight: 34.4 kg

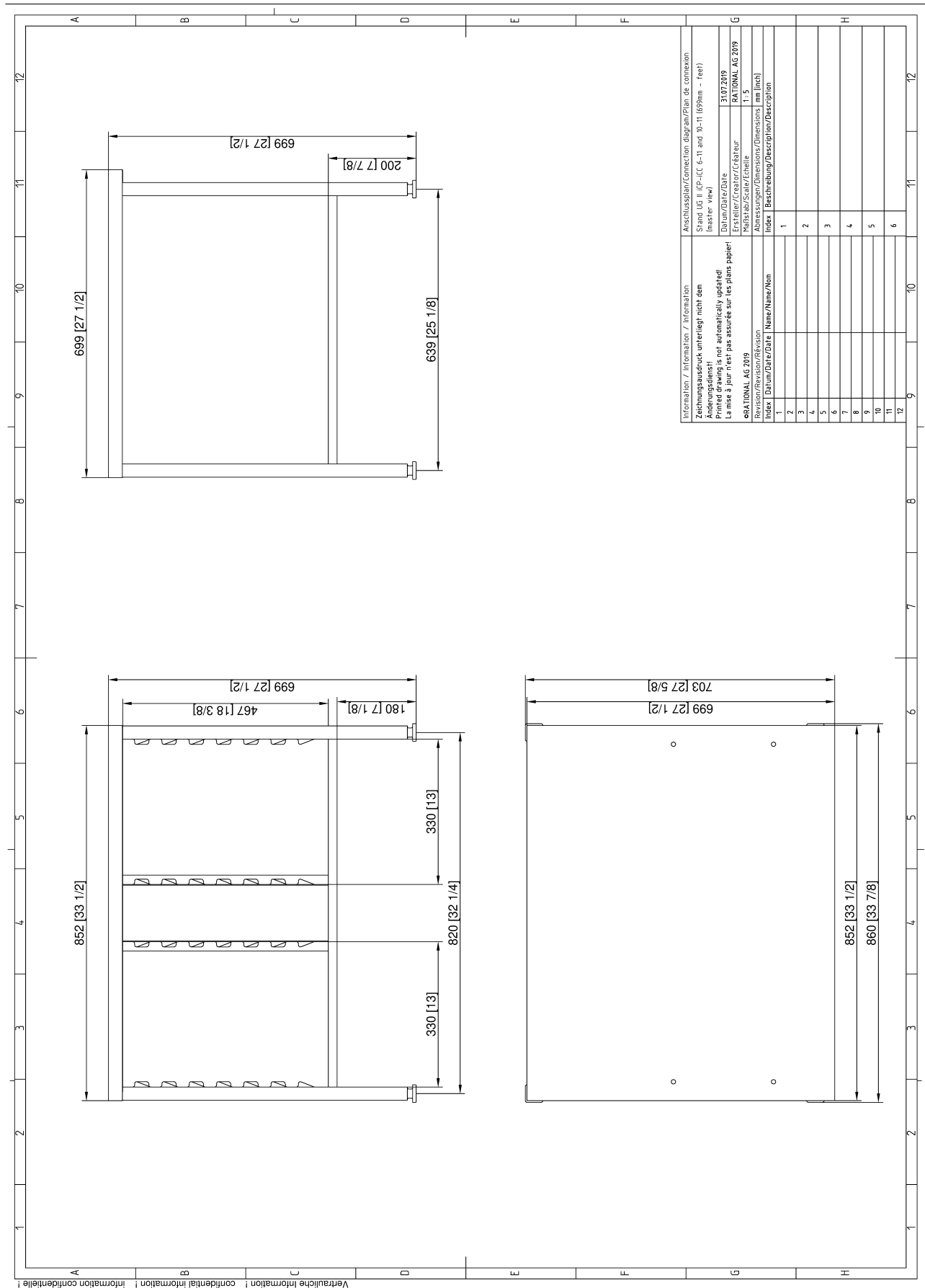
### Capacity

- 1/1 GN grid x 14
- 1/1 GN 20 mm deep x 14
- 1/1 GN 40 mm deep x 14
- 1/1 GN 65 mm deep x 7
- 1/1 GN 100 mm deep x 7
- Use of other containers: 1/4 GN, 1/3 GN, 1/2 GN, 2/3 GN

### Material

- CNS 1.4301

**Specification/Data sheet**  
**Stand II model 6-1/1, 10-1/1 - Standard**



Information / Information / Information		Anschlussplan/Connection diagram/Plan de connexion	
Zeichnungsausdruck unterliegt nicht dem Änderungsdienst Printed drawing is not automatically updated La mise à jour n'est pas assurée sur les plans papier		Stand UG II (CP-CC 6-11 and 10-11 (699mm - feet)	
RATIONAL AG 2019		RATIONAL AG 2019	
Revision/Revision/Revisión		Date/Date/Date	
Index		Name/Name/Nom	
1		1	
2		2	
3		3	
4		4	
5		5	
6		6	
7		7	
8		8	
9		9	
10		10	
11		11	
12		12	

Visit us on the internet: [www.rationalusa.com](http://www.rationalusa.com)

We reserve the right to make technical improvements