



Operation Manual
For
Sodir
CT-540, CT-3000 Conveyor Toaster



765 Westminster Street • Providence, Rhode Island 02903 • U.S.A.
Tel: (401) 273-3300 Fax: (401) 273-3328
www.equipex.com e-mail: service@equipex.com





IMPORTANT SAFEGUARDS

When using electrical appliances, basic safety precautions should always be followed, including the following:

1. Read all the instructions before use.
2. Do not touch hot surfaces; use handles or knobs.
3. To avoid electric shock, **do not immerse the power cord, or any part of the unit**, in any liquid.
4. Close supervision is necessary when any appliance is used, especially around children.
5. Unplug appliance from the electrical outlet when not in use, and before cleaning. Allow appliance to cool before installing or removing any parts or accessories, and before cleaning.
6. Do not operate any appliance with a damaged cord or plug, or if appliance should sustain damage, or malfunction in any way. In this event, return appliance to the nearest authorized service facility for examination, repair or adjustment.
7. The use of accessories and/or attachments not recommended by the appliance manufacturer may cause injury or damage to the appliance, and may void your warranty.
8. Do not use outdoors.
9. Do not allow the power cord to hang over the edge of a table or counter, or to be exposed to hot surfaces, as damage may occur.
10. Do not place appliance on or near a burner, or in a heated oven.
11. To disconnect an appliance, **first** turn all controls to the 'off' position; *then* unplug the power cord from the wall outlet.
12. Do not use appliance other than for its intended use.
13. SAVE THESE INSTRUCTIONS FOR LATER USE!

INTRODUCTION

The **SODIR** models CT-540 and CT-3000 Conveyer Toaster/Ovens are designed to offer quality food warming and toasting. They are constructed of food service quality stainless steel for commercial applications. The CT-540 can be used in pass-through configuration, or front-loading and unloading. It has a 12" wide by 1-3/4 inch throat opening. Its controls feature top-only, bottom-only or all elements 'on' configurations. The CT-3000 is a 12 inch wide pass-through model, with adjustable inlet and outlet throat height from 1-1/4 to 3-1/2 inches. Its controls are installed in a remote box, attached by a cord, which allows for right or left side, or even wall mounting, and provide full power or half power of all elements, along with conveyer speed adjustment. Both Toaster/Ovens feature infrared quartz elements, and adjustable conveyer speed for perfect toasting of varied products such as bread, bagels, sandwiches, pizzas or anything else that requires warming or toasting. The green indicator lamp illuminates to show the unit is plugged in. The orange indicator lamp illuminates to show the elements are on and heating.

Specifications:

Model Configuration	Electrical	Plug
CT-540	208/240V, 1 PH, 3KW, 11/13A	NEMA-6-20P
CT-3000	208/240V, 1 PH, 3.4KW, 12/14A	NEMA-6-20P

INSTALLATION

The **SODIR** Conveyer Toaster/Ovens need to be connected to a grounded outlet of proper voltage of 208/240V. **DO NOT** place the unit in a damp area or near steam sources. When positioning the Toaster, make sure that the ventilation holes are not blocked. Maintain 4" clearance at each side, rear and top of the toaster. **DO NOT PLACE THE EQUIPMENT DIRECTLY OVER OPEN FLAMES.**

ASSEMBLY

The SODIR CT-3000 Conveyor Toaster comes from the factory completely assembled. The CT-540 back shelf and diverter must be assembled if pass through operation is desired. If you choose to use the conveyor in pass-through mode, attach the wire rack to the back of the unit by inserting the two wire ends of the rack into the holes provided, and then attaching the diverter door, 'U' channel down, to the lower set of pins, making a shelf for the product to be pushed onto the back rack. If you desire the front loading/unloading option, attach the diverter door in the back opening by placing the 'U' channel over the pins at the top left and right, closing off the rear opening and allowing the product to hit the diverter and drop down onto the slope below. Finally, attach the front sloped shelf by inserting the two screws at the front of the conveyor through the two keyhole shaped slots on the shelf.

(unfortunately, you probably need a diagram of all three assemblies described above)

The toasters may be shipped with plastic exterior and interior protective film, all of which must be removed before operation. **DO NOT** operate the toaster prior to removing the protective film completely.

OPERATION

Cooking

The units are provided with removable crumb trays at the bottom to allow for easier cleanup.

Turn toaster power switch to desired power configuration and adjust knob for desired belt speed. The CT-540 features an angled loading shelf that will feed product into the toaster as the belt advances.

When loading the CT-3000, first adjust the throat height before preheating by sliding the movable panels to the left, raising or lowering to the desired height, and then sliding the panel back to towards the right to lock into place. Next, place product in the toaster far enough that the belt will pull it through. Finished products will exit the other end of the toaster, onto the rack

Cleaning

WARNING: Disconnect (unplug) electrical power supply before cleaning

Cleaning is very important in maintaining a safe and well working machine. Allow the toaster to cool before cleaning. The crumb trays, rear rack, front shelf and diverter door (CT-540) and belt cover (CT-3000) are separately removable, and can be cleaned using a damp cloth or sponge and mild liquid soap, or placed in a dishwasher. Use a cloth dampened slightly with a soap and water mixture to clean all exterior and interior stainless steel surfaces and glass, being careful not to crack or damage the quartz tubes. Use a clean lint-free cloth to remove the excess water. Make sure no water enters the unit through ventilation holes.

DO NOT use an abrasive sponge on exterior or interior surfaces

DO NOT wash the toaster under running water

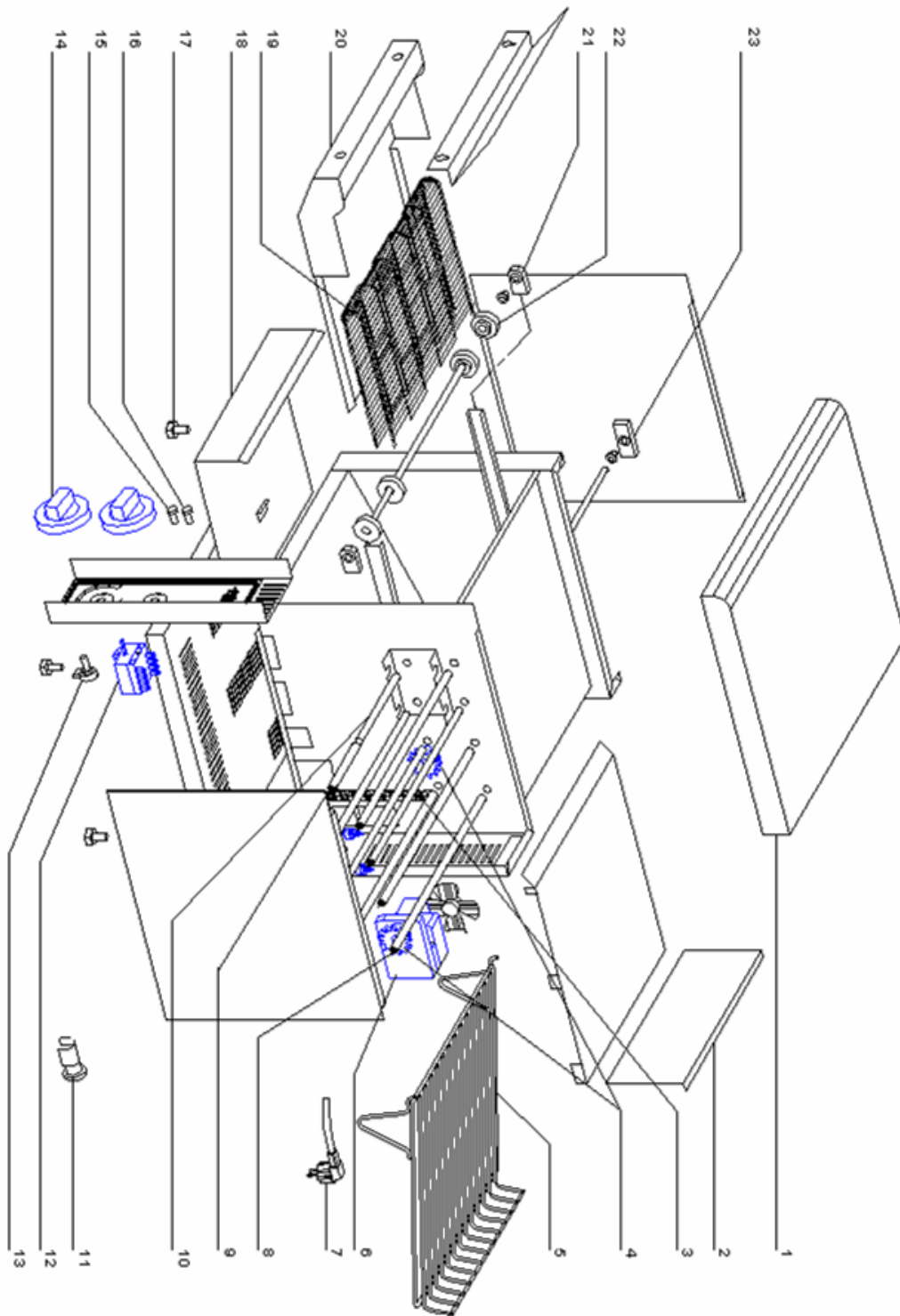
DO NOT spray the exterior or interior housing with any liquid

DO NOT allow water to drip into the housing or onto electrical components

Maintenance

You should inspect all parts on a regular basis to ensure that all is in proper working order. If a part is damaged, have the unit repaired by an authorized service agency prior to returning the unit to operation. If you have trouble locating a service agency in your area, please consult our website at <http://www.equipex.com/>, or call us at 1-800-649-7885 and ask for customer service.

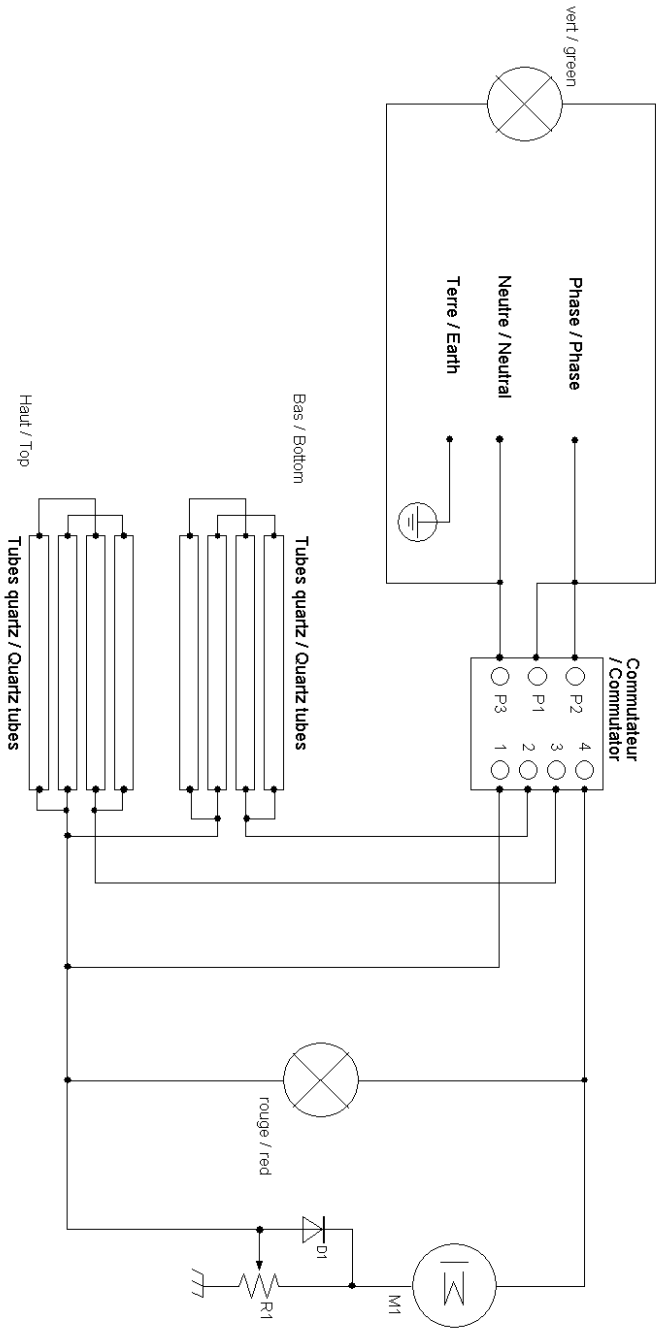
Spare Parts CT-540



Spare Parts CT-540

DWG#	Part Number	Qty	Description
1	57031	1	Top hot casing
2	57008SE	1	Removable reflector
3	B07020	1	Chain
4	B01004	4	Gear wheel
5	F01046	1	Grid
6	A03038	1	Motor
7	OEM	1	Cord with plug
8	D01044	4	Top heating element
9	D01045	4	Bottom heating element
10	D04015	8	Quartz tube
11	A10002	1	Cord closer
12	A01001	1	Mode Switch
13	A04005	1	Potentiometer
14	A14078	2	Knob
15	A08009	1	Green pilot light
16	A08003	1	Orange pilot light
17	A13009	4	Foot
18	57004SE	1	Toast tray
19	F01045	1	Metallic grid
20	57012	1	Reflector drawer
21	B03004	2	Front bearing
22	B06035	6	Wheel
23	B03003	2	Back bearing

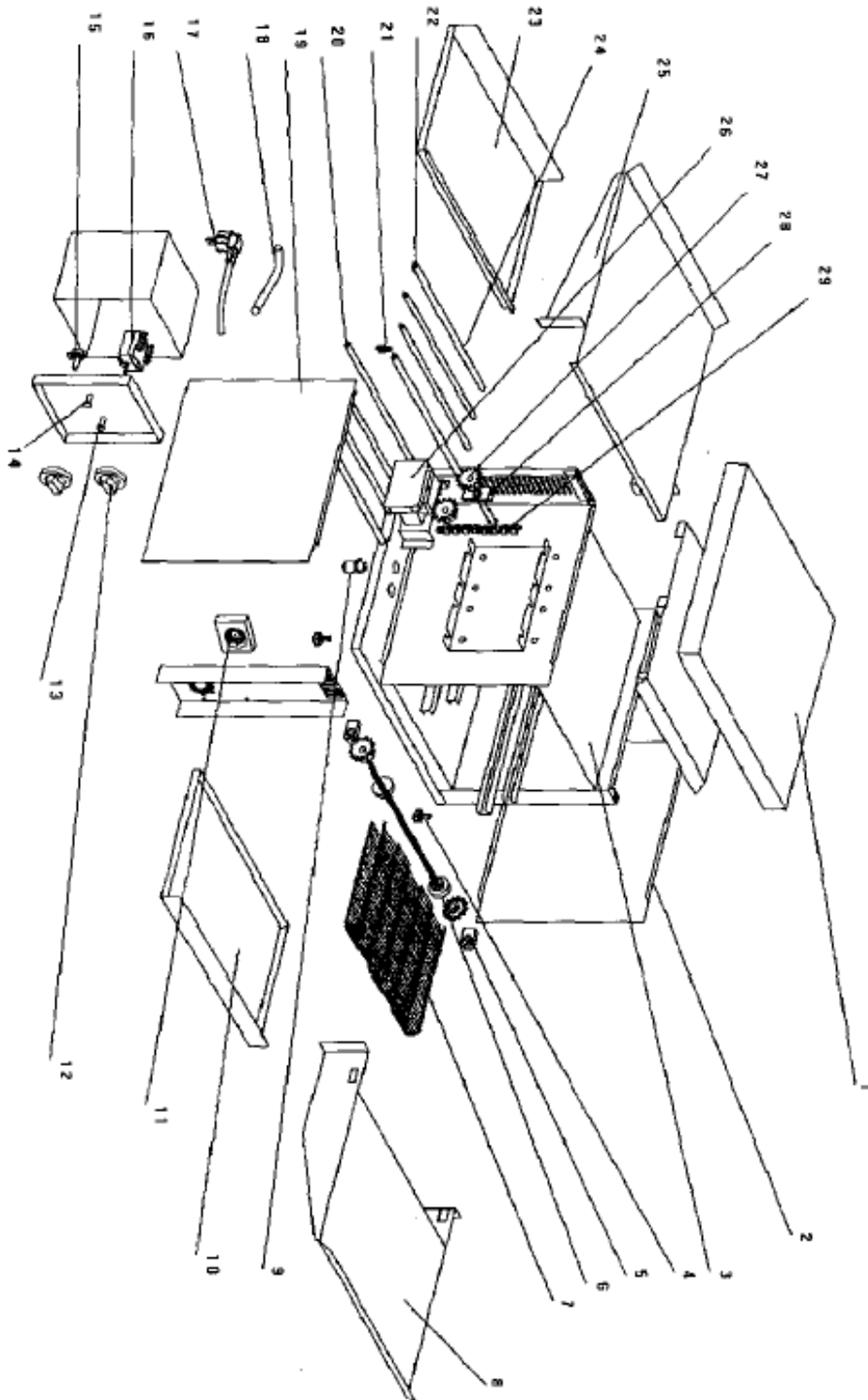
1 2 3 4 5 6 7 8 9 10 11 12 13 14



Modifications		Date	Norm	Description
Date	Norm			CT 540
17/04/2007	A.DAVID			Reference câblage C02130

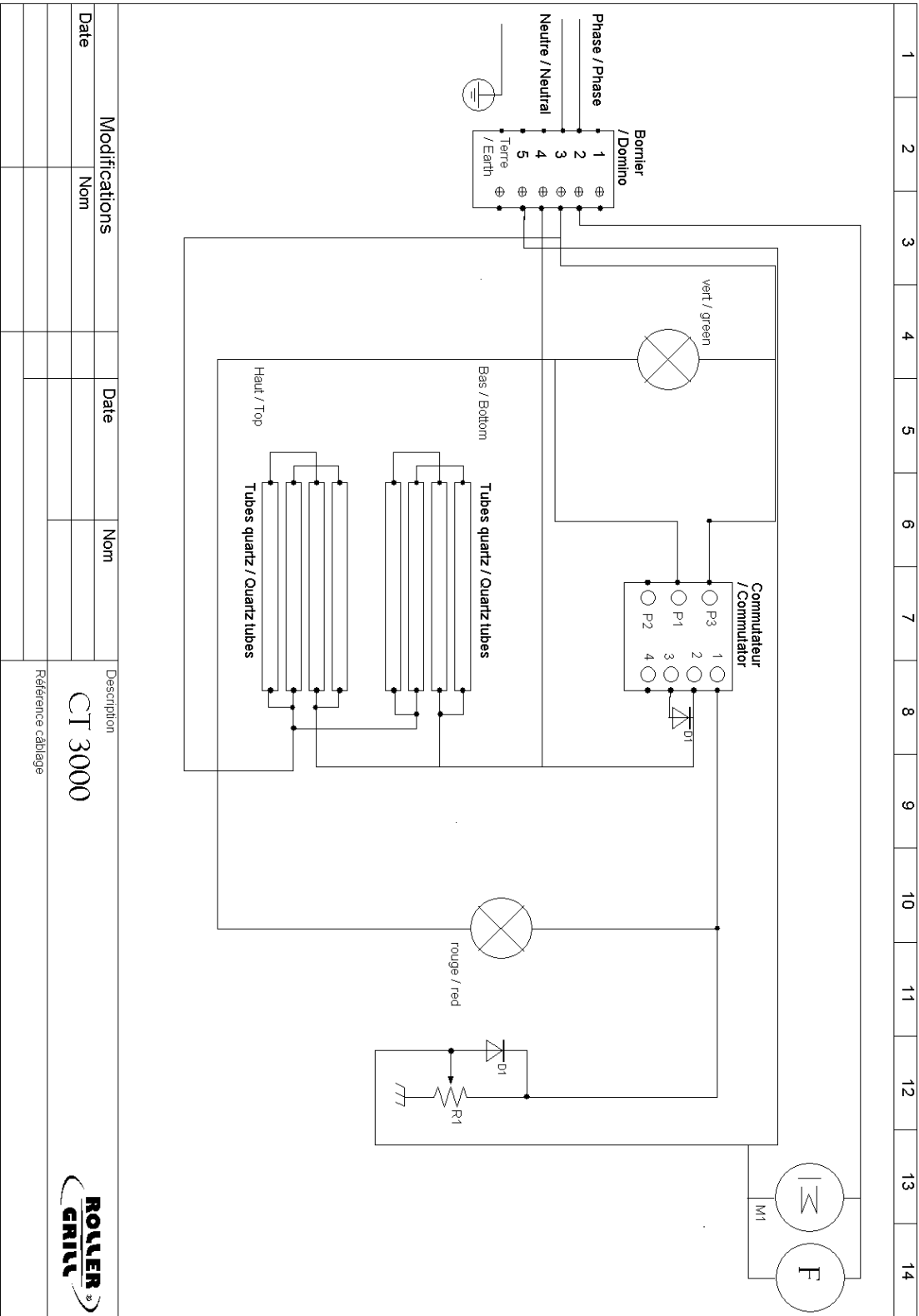


Spare Parts CT-3000



Spare Parts CT-3000

DWG#	Part Number	Qty	Description
1	57040	1	Roof
2	57049	1	Right Side
3	57041	1	Reflector
4	A13012	4	Foot
5	B03004	2	Front bearing
6	B06035	4	Wheel
7	F01045	1	Metallic grid
8	57055	1	Loading Tray N2
9	A10032	2	Cord closer
10	57057	1	Dish N2
11	A03061	1	Fan
12	A14111	2	Knob
13	A08003	1	Orange pilot light
14	A08009	2	Green pilot light
15	A04005	1	Potentiometer
16	A01001/1	1	Mode Switch
17	OEM	1	Cord w/ Plug
18	C01018	1	Cord 5 x 1.5
19	57050	1	Left Side
20	D01054	4	Bottom Heating Element
21	A09003COM	16	Steatite (Ceramic Insulator)
22	D01045	4	Top Heating Element
23	57056	1	Dish N1
24	D04015	8	Quartz Tube
25	57054	1	Unloading Tray N1
26	A03038	1	Motor
27	B01004	6	Gear Wheel
28	B03003	2	Back Bearing
29	B07031	1	Chain





LIMITED WARRANTY

Your new **EQUIPEX** product is warranted to the original purchaser for a period of one year from the date of purchase.

This limited warranty is against defects from original factory imperfections in material and/or workmanship and includes labor for replacement of defective parts, provided repairs are performed by an authorized service agency. Our obligation under this warranty is limited to repairing or replacing any part or parts thereof. The CUSTOMER must inform the Service Agency of warranty coverage and provide a copy of the dated sales or delivery receipt BEFORE WARRANTY REPAIRS BEGIN. Replacement parts and accessories are warranted for ninety (90) days from the date of purchase when purchased separately and will be verified by dated sales receipt or packing slip for that item. All parts or accessories replaced under warranty must be returned to the Service Agency.

This warranty applies only to equipment under normal use and service in the U.S.A. and Canada. It does not apply to any item which has been repaired or altered in any way so as, in the judgment of EQUIPEX, to affect its reliability.

THE FOLLOWING ARE NOT COVERED UNDER WARRANTY:

1. Damage caused by abuse, misuse or dropping or other similar incidental damage caused by, or as a result of, customer failure to follow assembly, operation, cleaning, user maintenance or storage instructions.
2. Labor to replace inoperative parts such as bulbs, plugs or racks due to normal wear and tear or abuse.
3. Materials or labor to repair scratched, stained, chipped, pitted, dented or discolored surfaces, attachments or accessories.
4. Transportation charges to or from a service agency for repair of your machine. If you should have questions relating to this issue, please call **Equipex** at 1-800-649-7885.
5. Labor charges to install or test attachments or accessories, which are replaced for any reason.
6. SHIPPING DAMAGES. Visible and hidden damages are the responsibility of the freight carrier. The consignee must file the claim promptly against the carrier. KEEP ALL ORIGINAL CONTAINERS AND PACKAGING MATERIAL FOR CARRIER INSPECTION.
7. Products placed or stored in the equipment are not subject to this warranty and no responsibility is assumed thereof.

THIS WARRANTY IS GIVEN EXPRESSLY AND IN LIEU OF ALL OTHER WARRANTIES, EXPRESSED OR IMPLIED, FOR MERCHANTABILITY AND FOR FITNESS TOWARD A PARTICULAR PURPOSE AND CONSTITUTES THE ONLY WARRANTY MADE BY EQUIPEX, LLC. IT NEITHER ASSUMES, NOR AUTHORIZES ANY PERSON TO ASSUME FOR US, ANY OTHER LIABILITY IN CONNECTION WITH THE SALE OF THE SUBJECT EQUIPMENT.

For service, please call **EQUIPEX** at 1-800-649-7885, menu option # 3

765 Westminster Street • Providence, Rhode Island 02903 • U.S.A.

Tel: (401) 273-3300

Fax: (401) 273-3328

www.equipex.com

e-mail: service@equipex.com