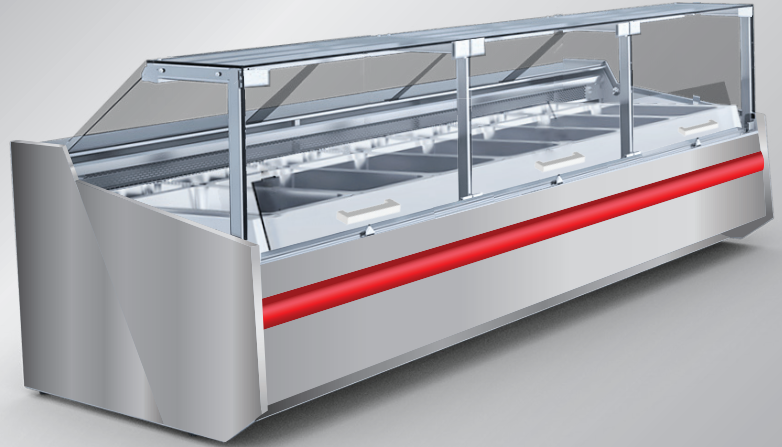


SALAD DISPLAY CASES

B3SSSCD Self Contained

DELUXE SALAD SHOW CASE W/ STRAIGHT LIFT-UP FRONT GLASS PANEL



Standard Features

- All stainless steel finish
- Granite work counter
- Straight front glass
- Illuminated display area
- Internal cooling aggregate
- Exposition area made of stainless steel
- Lamp with LED light
- Automatic defrost cycle
- Digital temperature display
- Automatic condensation disposal

Options

- Internal frame painted silver or gold
- Device without side panels prepared for multiplexing
- Other front glass aperture types available (i.e. telescopic, etc.)
- Endless Lineup, any length available
- Stainless steel work countertop available

B3SSSCD12

Plastic bumpers colours



Granite colors



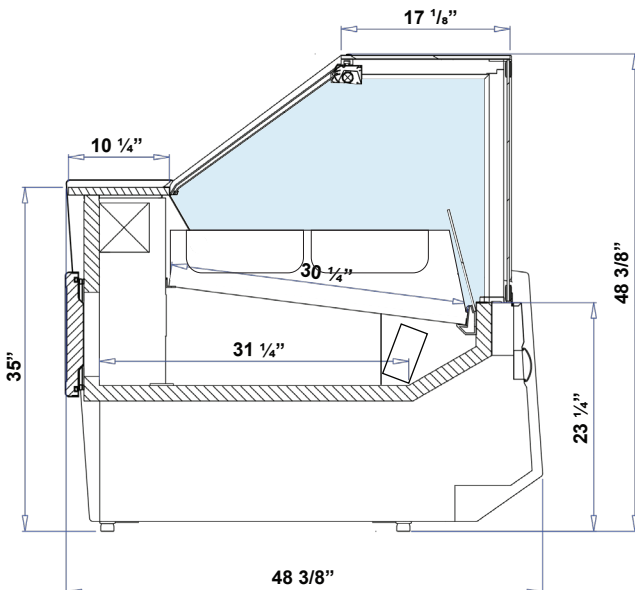
Aluminum profiles colors



Dimensions

Model	Dimension W x D x H	Weight (lbs / kg)
B3SSSCD3	40 1/8" x 48 3/8" x 48 3/8"	-
B3SSSCD4	52 3/8" x 48 3/8" x 48 3/8"	-
B3SSSCD5	64 3/4" x 48 3/8" x 48 3/8"	-
B3SSSCD6	77 1/4" x 48 3/8" x 48 3/8"	-
B3SSSCD8	101 1/2" x 48 3/8" x 48 3/8"	-
B3SSSCD10	126 3/8" x 48 3/8" x 48 3/8"	-
B3SSSCD12	150 3/4" x 48 3/8" x 48 3/8"	-

Technical Drawing



Voltage

- B3SSSCD3~8 115V / 1ph / 60 Hz / 8A, max. fuse: 15A
- B3SSSCD10,12 2X 115V / 1ph / 60 Hz / 12A, max. fuse: 15A

* Specifications are subject to change without notice.

**All measurements are approximates.

***All equipment designed to operate in controlled environment below 75°F (+24°C) temperature and HR 55% relative humidity.