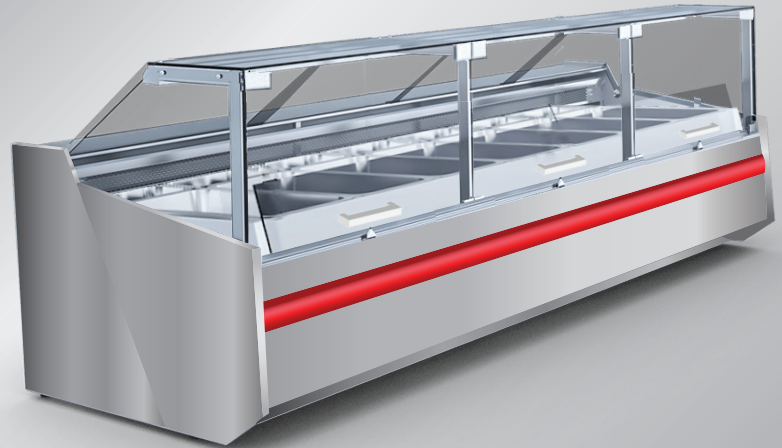


B3HTSSD Heated Case

DELUXE HOT FOOD SHOW CASE W/ STRAIGHT LIFT-UP FRONT GLASS PANEL



Standard Features

- All stainless steel finish
- Straight front glass
- Exposition area made of stainless steel
- Granite work counter
- Illuminated display area
- Thermostat heat control
- Temperature range: +30 °C / +90 °C

Options

- Internal frame painted silver or gold
- Device without side panels prepared for multiplexing
- Other front glass aperture types available (i.e. telescopic, etc.)
- Endless lineup, any length available
- Stainless steel work countertop available

B3HTSSD12

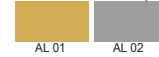
Plastic bumpers colours



Granite colors



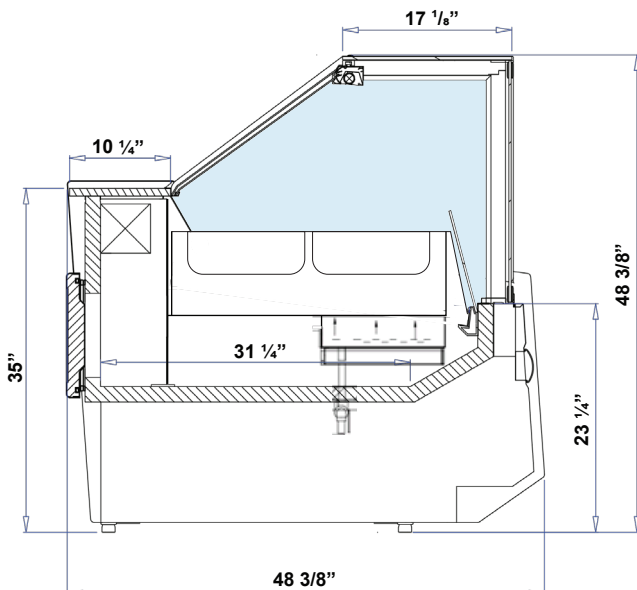
Aluminum profiles colors



Dimensions

Model	Dimension W x D x H	Weight (lbs / kg)
B3HTSSD3	40 1/8" x 48 3/8" x 48 3/8"	-
B3HTSSD4	52 3/8" x 48 3/8" x 48 3/8"	-
B3HTSSD5	64 3/4" x 48 3/8" x 48 3/8"	-
B3HTSSD6	77 1/4" x 48 3/8" x 48 3/8"	-
B3HTSSD8	101 1/2" x 48 3/8" x 48 3/8"	-
B3HTSSD10	126 3/8" x 48 3/8" x 48 3/8"	-
B3HTSSD12	150 3/4" x 48 3/8" x 48 3/8"	-

Technical Drawing



Voltage

- B3HTSSD3 : 115V,220V / 1ph / 60 Hz / 10A, max. fuse: 15A
- B3HTSSD4 : 115V,220V / 1ph / 60 Hz / 13A, max. fuse: 15A
- B3HTSSD5 : 115V,220V / 1ph / 60 Hz / 17A, max. fuse: 25A
- B3HTSSD6 : 115V,220V / 1ph / 60 Hz / 20A, max. fuse: 25A
- B3HTSSD8 : 115V,220V / 1ph / 60 Hz / 25A, max. fuse: 30A

* Specifications are subject to change without notice.

**All measurements are approximates.

***All equipment designed to operate in controlled environment below 75°F (+24°C) temperature and HR 55% relative humidity.