

CUDP 2 Shelf

STRAIGHT GLASS NON-REFRIGERATED PASTRY CASE



CUDP4

Standard Features

- Non-refrigerated display case
- Side panels made of black/white coated steel
- Glass shelves with height and angle adjustment
- Bottom shelf made of black/white melamine
- Back sliding doors with combined glass
- Straight front glass
- Each shelf includes LED lighting
- Device leveling legs

Options

- Multiple colours available
- Option of multiplexing
- Internal frame available in silver or gold

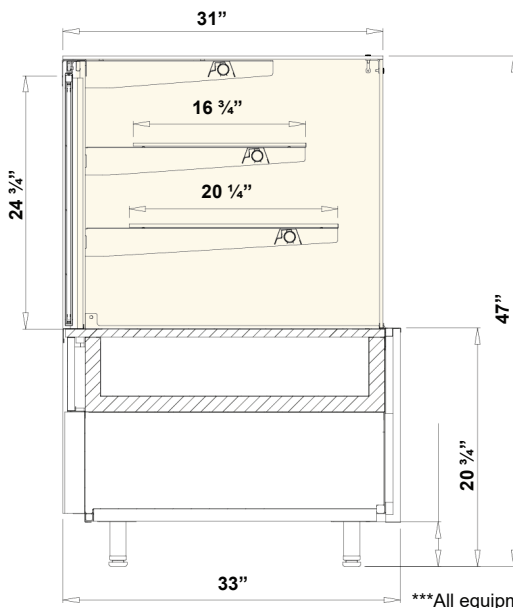
Metal element colours



Aluminum profile colours



Technical Drawing



Dimensions

Model	Dimension W x D x H	Weight (lbs / kg)
CUDP2	24" x 33" x 47"	209 / 95
CUDP3	36" x 33" x 47"	308 / 140
CUDP4	51 1/2" x 33" x 47"	397 / 180
CUDP6	71 1/2" x 33" x 47"	441 / 200

*** Customizable options available**

*** Multiple sizes available**

Voltage

- CUDP2 : 115V / 1ph / 60 Hz / 2A, max. fuse: 15A
- CUDP3,4 : 115V / 1ph / 60 Hz / 3A, max. fuse: 15A
- CUDP6 : 115V / 1ph / 60 Hz / 6A, max. fuse: 15A

* Specifications are subject to change without notice.

**All measurements are approximates.

***All equipment are designed to operate in a controlled environment below 75°F (+24°C) temperature and HR 55% relative humidity.