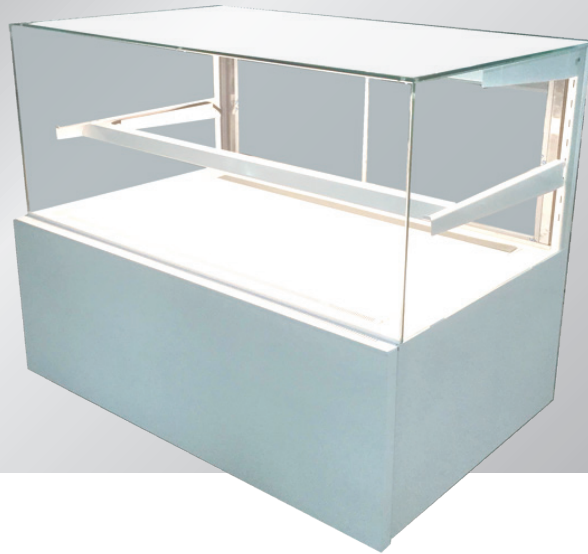


### CURLP 1 Shelf

### LOW PROFILE STRAIGHT GLASS REFRIGERATED PASTRY CASE



CURLP4

#### Standard Features

- Internal cooling aggregate
- Dynamic cooling (ventilated) system
- Exterior made of black/white coated steel
- Side panels made of black/white coated steel
- Ecological polyurethane foam insulation
- Bottom shelf made of black/white melamine
- Back sliding doors with combined glass
- Straight front glass
- Each shelf includes LED lighting
- Leveling legs
- Automatic defrost system
- Automatic condenser vaporization system
- Electronic temperature controller with digital display
- Glass shelves with height and angle adjustment

#### Options

- Multiple colours available
- Option of multiplexing
- Internal frame available in silver or gold
- Remote compressor

#### Metal element colours



#### Aluminum profile colours

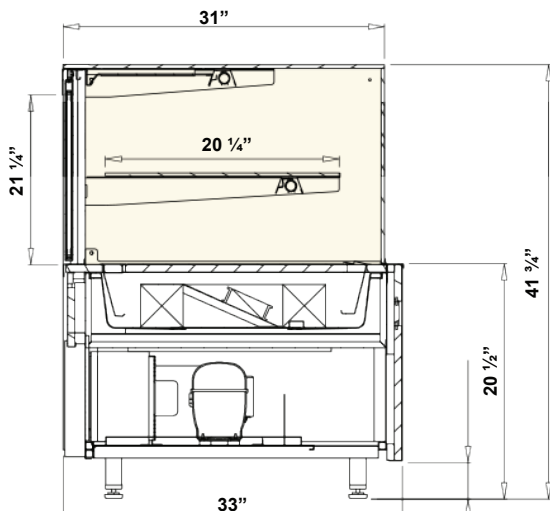


#### Dimensions

Model	Dimension W x D x H	Weight (lbs / kg)
CURLP2	24" x 33" x 41 3/4"	180 / 81
CURLP3	36" x 33" x 41 3/4"	220 / 99
CURLP4	51 1/2" x 33" x 41 3/4"	441 / 200
CURLP6	71 1/2" x 33" x 41 3/4"	- / -

**\* Customizable options available**  
**\* Multiple sizes available**

#### Technical Drawing



\*\*\*All equipment are designed to operate in a controlled environment below 75°F (+24°C) temperature and HR 55% relative humidity.

#### Voltage

- CURLP2,3 : 115V / 1ph / 60 Hz / 8A, max. fuse: 15A
- CURLP4 : 115V / 1ph / 60 Hz / 12A, max. fuse: 15A
- CURLP6 : 115V / 1ph / 60 Hz / 15A, max. fuse: 20A

\* Specifications are subject to change without notice.

\*\*All measurements are approximates.