

COCILS-P

CASH COUNTER



COCILS-P28

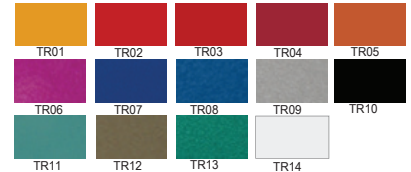
Standard Features

- Full slide-out drawer
- Kick plinth made of stainless steel

Options

- Set of castors
- Different granite colours available

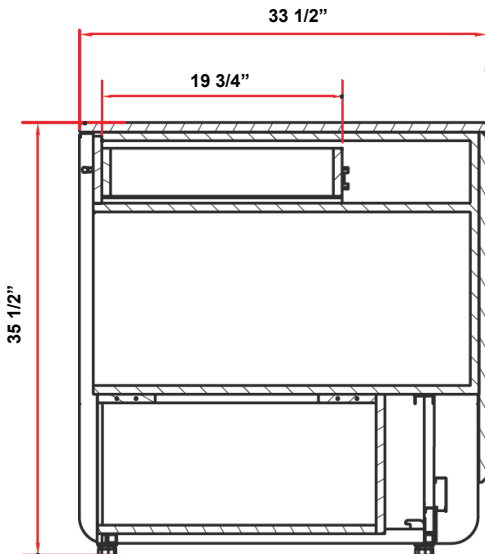
Trend colours



Granite colours



Technical Drawing



Dimensions

Model	Dimension W x D x H	Weight (lbs / kg)
COCILS-P28	27 1/2" x 33 1/2" x 35 1/2"	- / -
COCILS-P39	39 3/8" x 33 1/2" x 35 1/2"	- / -
COCILS-P55	55 1/8" x 33 1/2" x 35 1/2"	- / -

* Specifications are subject to change without notice.

**All measurements are approximates.

***All equipment are designed to operate in a controlled environment below 75°F (+24°C) temperature and HR 55% relative humidity.