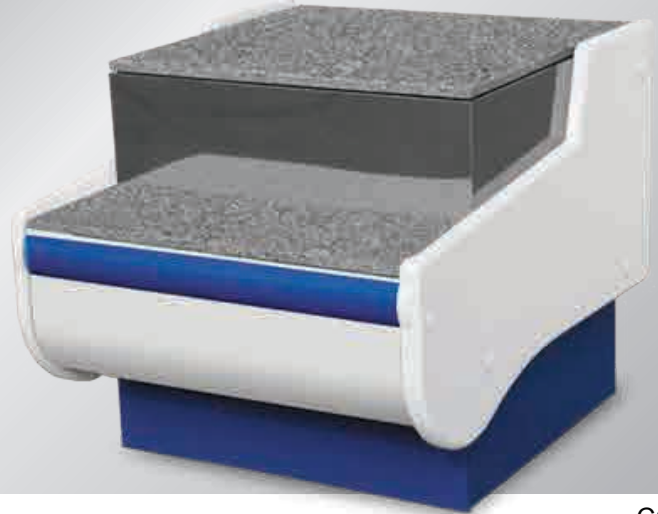


COCB

CASH COUNTER MATCHING WITH BSCD MODEL



COCB31

Standard Features

- Grey granite worktop (thickness 3/4")
- Matching front with BSCD model refrigerated display cases
- External housing made of white coated steel
- Device leveling legs
- Socket

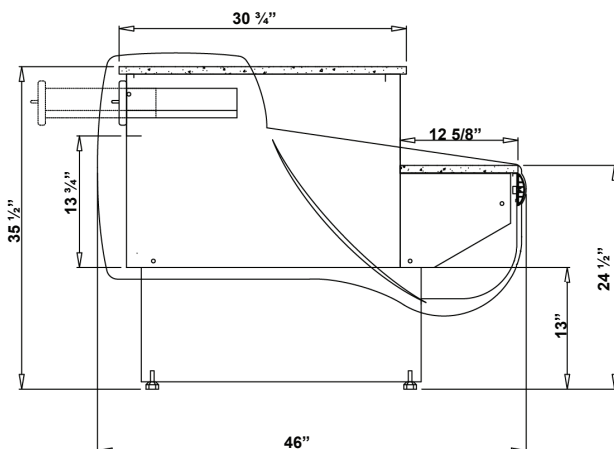
Options

- Other colors available
- Custom made upon customers request



BSCD

Technical Drawing



***All equipment designed to operate in controlled environment below 75°F (+24°C) temperature and HR 55% relative humidity.

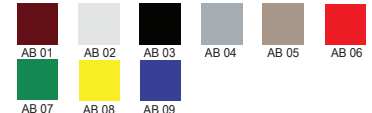
Metal elements colors



Plastic bumpers colors



Plastic sides colors



Granite colors



Aluminum profiles colors



Dimensions

Model	Dimension W x D x H	Weight (lbs / kg)
COCB19	19" x 46" x 35 1/2"	125.7 / 57
COCB23	23" x 46" x 35 1/2"	143.3 / 65
COCB27	27" x 46" x 35 1/2"	160.9 / 73
COCB31	31" x 46" x 35 1/2"	178.6 / 81
COCB35	35" x 46" x 35 1/2"	196.2 / 89
COCB38	38 3/4" x 46" x 35 1/2"	213.8 / 97
COCB42	42 3/4" x 46" x 35 1/2"	231.5 / 105
COCB46	46 3/4" x 46" x 35 1/2"	249.1 / 113
COCB50	50 1/2" x 46" x 35 1/2"	266.8 / 121
COCB54	54 1/2" x 46" x 35 1/2"	286.6 / 130
COCB58	58 1/2" x 46" x 35 1/2"	304.2 / 138
COCB62	62 1/2" x 46" x 35 1/2"	321.9 / 146

Voltage

- N/A

* Specifications are subject to change without notice.

**All measurements are approximates.