

CUDLP 1 Shelf

LOW PROFILE STRAIGHT GLASS NON-REFRIGERATED PASTRY CASE



CUDLP4

Standard Features

- Ambient device (without cooling system)
- Side panels made of black/white coated steel
- Glass exposition shelves with height and angle adjustment
- Bottom shelf made of black/white melamine
- Back sliding doors with combined glass
- Straight front glass
- Each shelf illumination - LED light
- Device leveling legs

Options

- Other colors available
- Possibility of multiplexing
- Internal frame painted silver or gold

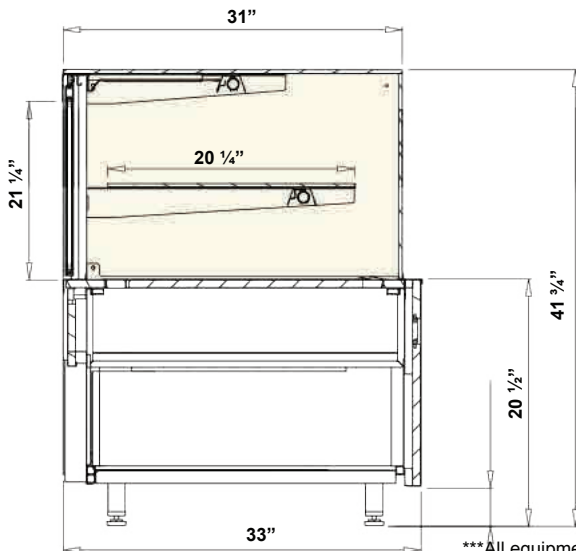
Metal elements colors



Aluminum profiles colors



Technical Drawing



Dimensions

Model	Dimension W x D x H	Weight (lbs / kg)
CUDLP2	24" x 33" x 41 3/4"	
CUDLP3	36" x 33" x 41 3/4"	
CUDLP4	51 1/2" x 33" x 41 3/4"	

* Endless lineup, any length available

Voltage

- CUDLP2 : 115V / 1ph / 60 Hz / 2A, max. fuse: 15A
- CUDLP3,4 : 115V / 1ph / 60 Hz / 3A, max. fuse: 15A

* Specifications are subject to change without notice.

**All measurements are approximates.