

DDP

Dry display case

**STAINLESS STEEL
NON-REFRIGERATED
IN PASTRY CASES**



DDP4

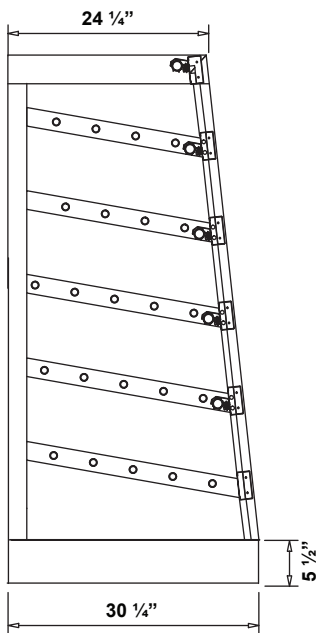
Standard Features

- Stainless steel finish
- Stainless steel rack
- LED lighting on each shelf

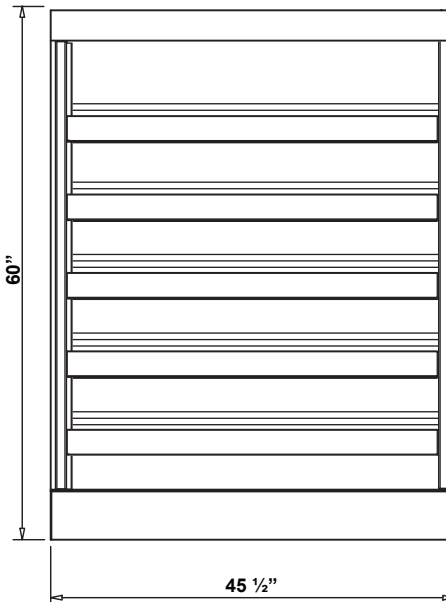
Dimensions

Model	Dimension W x D x H	Weight (lbs / kg)
DDP4	45 1/2" x 30 1/4" x 60"	-

Technical Drawing



SIDE



FRONT

Voltage

- 115V / 1ph / 60 Hz / 3A, max. fuse: 15A

* Specifications are subject to change without notice.

**All measurements are approximates.

***All equipment designed to operate in controlled environment below 75°F (+24°C) temperature and HR 55% relative humidity.